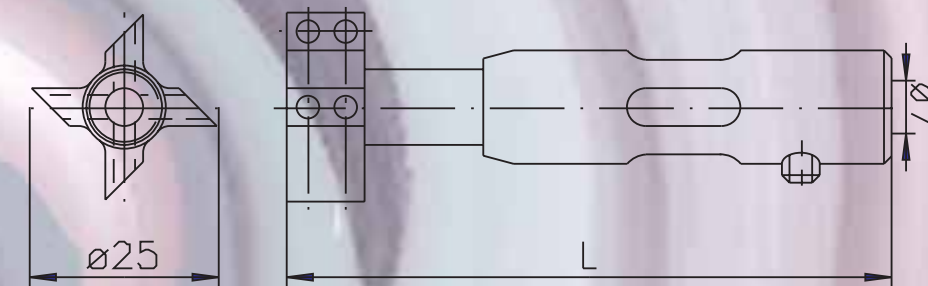
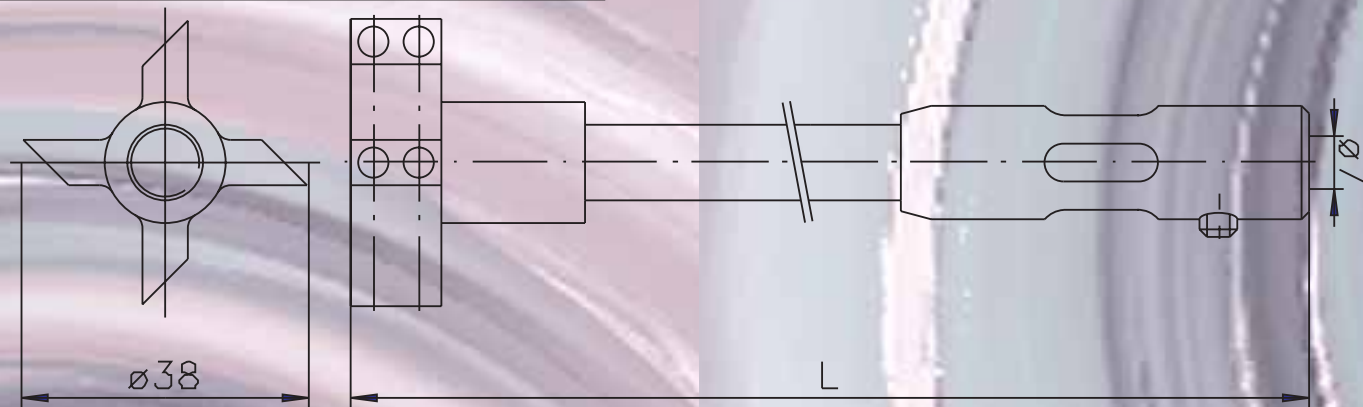


Gas injection stirrers, the result is considerably shorter reaction times than with conventional stirring systems.

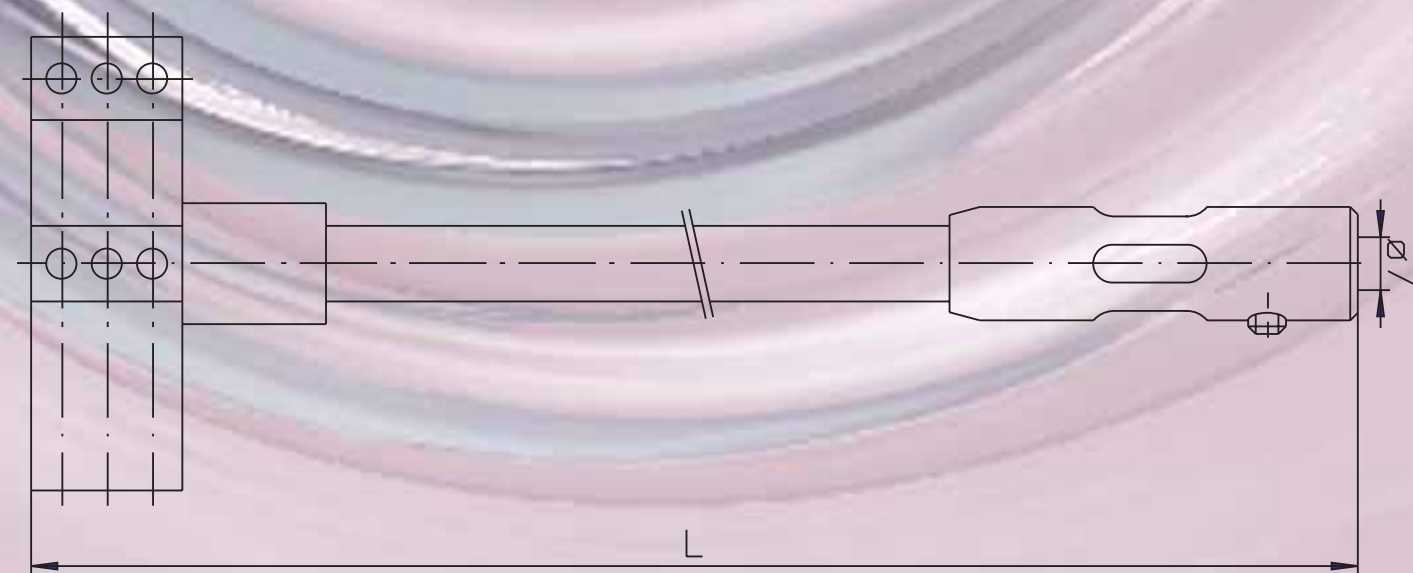
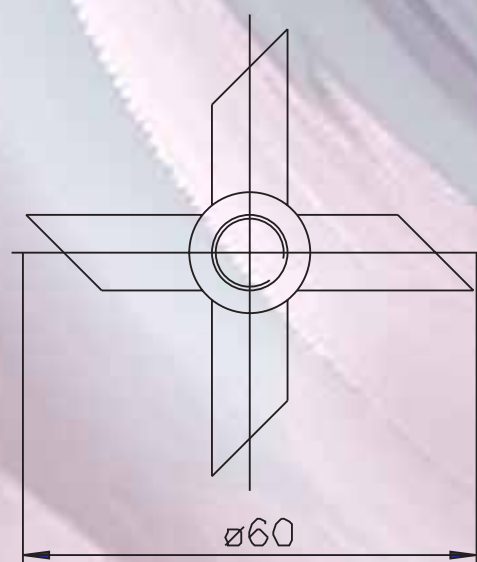
When the stirrer is rotated to the right, a vacuum is formed behind the 45° inclines on the propeller. The vacuum causes huge suction. This means that the gas quickly passes from the gas container, through the hollow shaft and into the medium.



Type	BR1	BR1	BR1	BR1	BR1	BR1	BR1	BR1	BR1
Prod. no.	1.2580.TG	1.25105.TG	1.25162.TG	1.2580.44	1.25105.44	1.25162.44	1.2580.HC22	1.25105.HC22	1.25162.HC22
Material	WNr.1.4435	WNr.1.4435	WNr.1.4435	WNr.1.4435	WNr.1.4435	WNr.1.4435	HC22	HC22	HC22
WNr./AISI	316 L/PTFE	316 L/PTFE	316 L/PTFE	316 L	316 L	316 L	-	-	-
ø mm	25	25	25	25	25	25	25	25	25
L mm	80	105	162	80	105	162	80	105	162
Vol. ml	200-500	350-500	750-1000	200-500	305-500	750-1000	200-500	350-500	750-1000

Type	BR2	BR2	BR2	BR2	BR2	BR2	BR2	BR2	BR2
Prod. no.	2.38162.TG	2.38187.TG	2.38240.TG	2.38162.44	2.38187.44	2.38240.44	2.38162.HC22	2.38187.HC22	2.38240.HC22
Material	WNr.1.4435	WNr.1.4435	WNr.1.4435	WNr.1.4435	WNr.1.4435	WNr.1.4435	HC22	HC22	HC22
WNr./AISI	316 L/PTFE	316 L/PTFE	316 L/PTFE	316 L	316 L	316 L	-	-	-
ø mm	38	38	38	38	38	38	38	38	38
L mm	162	187	240	162	187	240	162	187	240
Vol. ml	750-1000	1500-2000	2500-3000	750-1000	1500-2000	2500-3000	750-1000	1500-2000	2500-3000

Type	BR3	BR3	BR3	BR3	BR3	BR3
Prod. no.	3.60240.TG	3.60285.TG	3.60240.44	3.60285.44	3.60240.HC22	3.60285.HC22
Material	WNr.1.4435	WNr.1.4435	WNr.1.4435	WNr.1.4435	HC22	HC22
WNr./AISI	/PTFE	/PTFE	AISI 316 L	AISI 316 L	-	-
ø mm	60	60	60	60	60	60
L mm	240	285	240	285	240	285
Vol. ml	2500-3000	3500-4500	2500-3000	3500-4500	2500-3000	3500-4500



gas injection stirrer

for rapid gas injection

Material

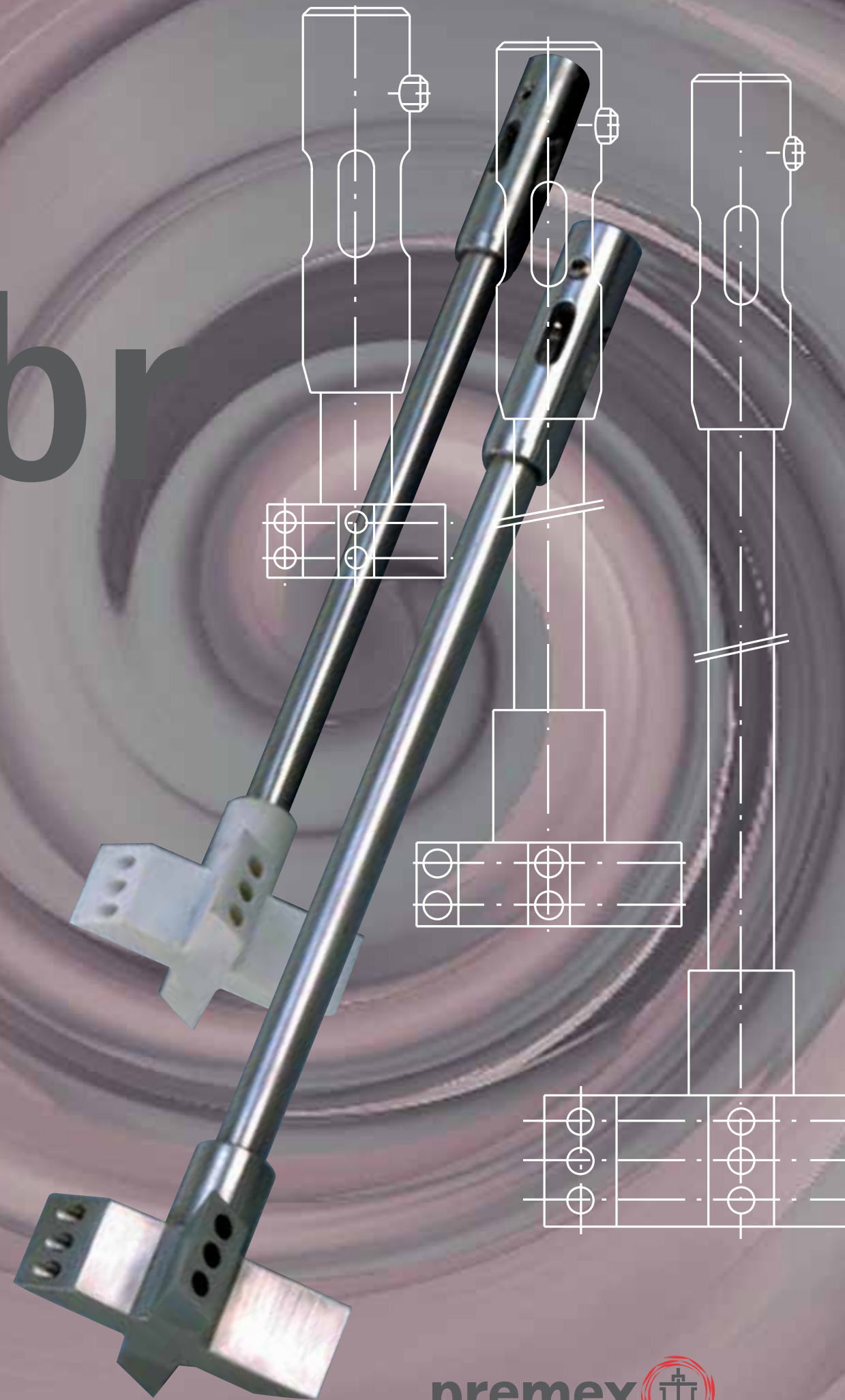
The gas injection stirrer series is available in three base materials. You can choose from high-grade steel, a combination of high-grade steel with PTFE propeller, or Hastelloy. Other materials available on request.

Connection

The gas injection stirrers are directly flanged onto the driven shaft of the MRK (\varnothing 7 mm) using a hex screw. The length of the stirrers can be customised to meet individual customer requirements.

gas injection

or gas injection



delivery address	premix reactor ag
correspondence address	industriestrasse 11
	p.o. box 444
	2543 lengnau/switzerland
phone	+41 (0)32 653 01 52
fax	+41 (0)32 652 11 80
internet	www.premex-reactorag.ch
e-mail	office@premix-reactorag.ch